



National 12
Inland Vintage Championships
27/28 June 2015
Burton Sailing Club



NOTICE OF RACE

1 RULES

The regatta will be governed by the rules as defined in *The Racing Rules of Sailing* and Burton SC

2 ELIGIBILITY AND ENTRY

- 2.1 The regatta is open to National Twelves of wooden clinker or ribbed wood construction.
- 2.1.1 No foiled rudders or trim tab centreboards allowed
- 2.1.2 No boats with double floors allowed.
- 2.1.3 No carbon masts allowed (carbon booms are allowed)
- 2.2 Eligible boats may enter by completing the form available at registration, together with the required fee.
- 2.2.1 Entry fee is £28 for both days, £18 for one day.

3 SCHEDULE (* Timing may be adjusted to suit)

- Sat 09:30 . Registration
- Sat 11:00 . Briefing *
- Sat 12:00 . Race 1 followed by lunch and race 2 & 3 (Derwent Handicap)
- Sat 18:30 . Evening Meal *
- Sun 10:00 . Race 1 followed by 2 more races. (Points Races)
- Sun 15:30 . Prize Giving *

4 SAILING INSTRUCTIONS

The sailing instructions will be available at registration

5 THE COURSES

The courses to be sailed will be described at the competitor briefing

6 SCORING

The Low Point System of Appendix A will apply. When fewer than 3 races have been completed, a boat's series score will be the total of her race scores, when from 3 or more races have been completed, a boat's series score will be the total of her race scores excluding her worst score.

7 RADIO COMMUNICATION

Except in an emergency, a boat shall neither make radio transmissions while racing nor receive radio communications not available to all boats. This restriction also applies to mobile telephones.

8 PRIZES

The following prizes will be awarded:

- The Towan Hancock Trophy- (based on Derwent Handicap applied to Saturday's races)
- Concours d'elegance (assessed over the weekend)
- Gill Half Model (based on the results of all boats in Sunday's races)
- Gill Admiral's Cup (based on the results of the ribbed boats in Sunday's races)
- Runners up Prizes

9 DISCLAIMER OF LIABILITY

Competitors participate in the regatta entirely at their own risk. See rule 4, Decision to Race. The organizing authority will not accept any liability for material damage or personal injury or death sustained in conjunction with or prior to, during, or after the regatta.

10 INSURANCE

Each participating boat shall be insured with valid third-party liability insurance with a minimum cover of £2,000,000 per event or the equivalent.

11 FURTHER INFORMATION

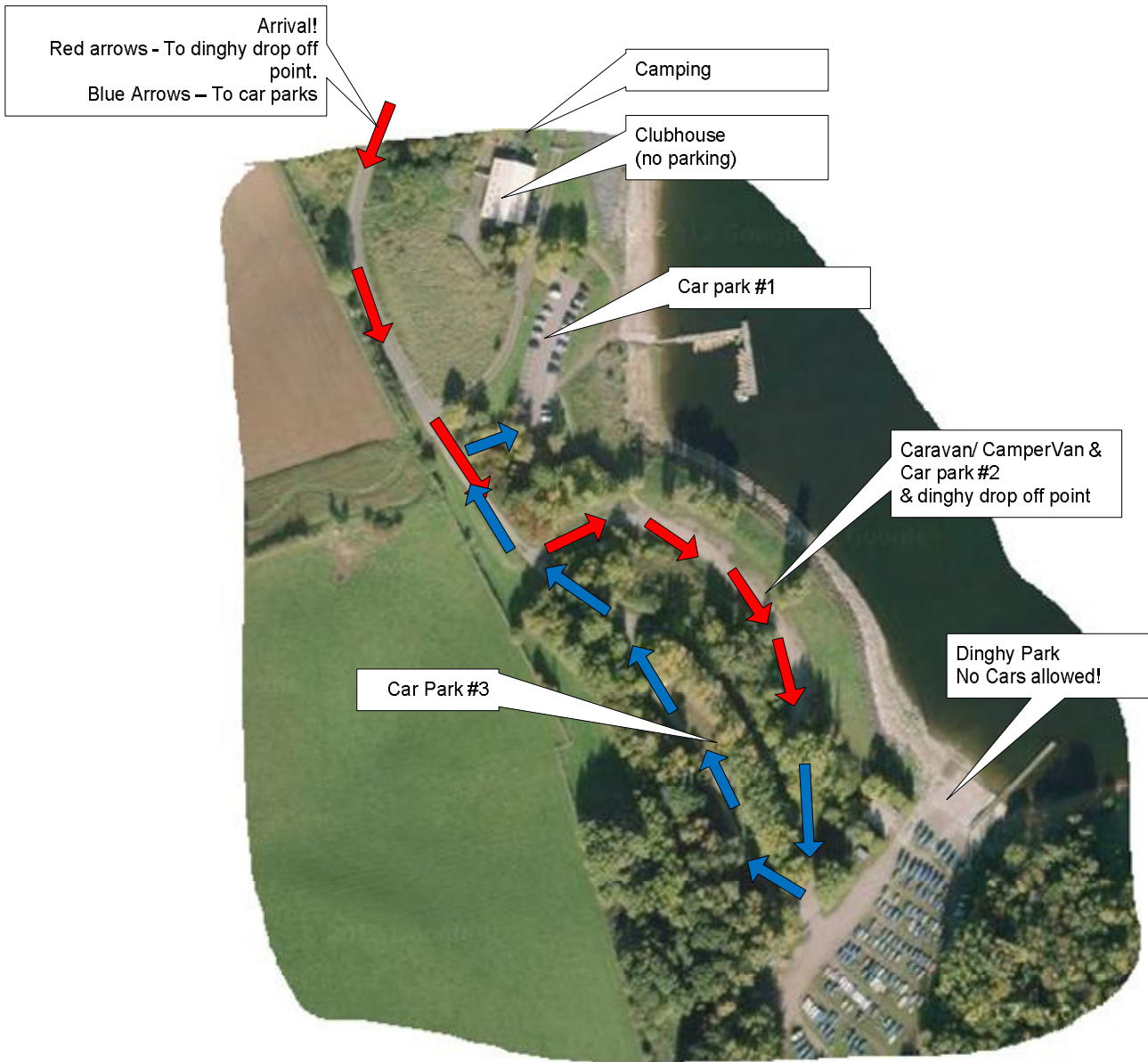
For further information please contact Burton Sailing Secretary email . sailsec@burtonsailingclub.co.uk or paul.turner@linghipp.co.uk or kandj.bloor@virgin.net

END OF NOTICE OF RACE

FACILITIES

- *Competitors and their families shall be deemed to be members of Burton Sailing Club for the duration of the championship.*
- *Camping and campervans are allowed on site at no cost (see site map). Overnight camping in the clubhouse is not allowed.*
- *Dogs are allowed on site but must be kept on a lead and under control and are not allowed in the clubhouse*
- *The galley will be open during the day on both days.*
- Competitors are advised to take care that they should enter the private entrance to Foremark Reservoir labelled for sailors and anglers and not the public entrance. The private entrance is West of the Public entrance on the same road that lies to the North of the reservoir (see picture below).





Burton SC - Large Event Arrival

To avoid dinghy park congestion at large events parking in the dinghy park is prohibited. Please follow the instructions below:

- Follow the route indicated by the red arrows to the dinghy drop off point.
- Unhitch dinghies and pull to the dinghy park.
- Park your car in one of the three car parks indicated.

Note at reaching top of hill on Foremark Reservoir driveway:

- 1st Left – is driveway to clubhouse, no parking, do not use!
- 2nd Left – leads to car park #1
- 3rd Left – leads to car park #2 and camper/caravan area