

New National 12 - Affordable Racing

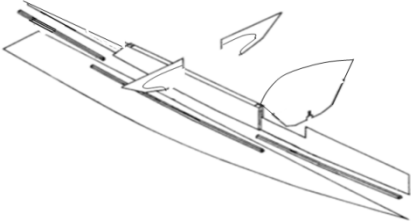
Sweet Chariot is a performance National 12 that can be built from a kit of precision cut plywood parts using hand tools in about 120 hours.



To this spine a 'single plank per side' is attached and the thoroughbred shape created simply by seaming the two contra-curving overlapping darts.



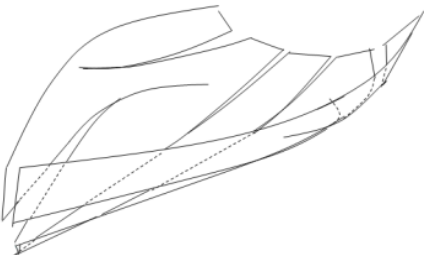
Fyne Boat Kits of Cumbria have developed an innovative patented construction approach to a design by Colin Cumming utilising FSC ockoume marine plywood and solvent free epoxy to create a strong lightweight durable ecologically sound aesthetic craft.



The unusual chine configuration imparts buoyancy and power aft and then loses itself into the shear line thereby contributing to the fine entry forward.



Construction involves a central 'T-beam' spine incorporating the centre-board case which also supports the self-draining double floor as well as providing a flat planning surface throughout the length of the hull.



The hull kit is available exclusively from FyneBoatKits.com for £2,300 including VAT

