

# Covers



All our range of National 12 **Flat** and **Overboom** covers are made from either high quality blue 360gsm PVC coated polyester or 508gsm breathable polyester cotton. Both are UV stabilised for long life and guaranteed for 5 years.

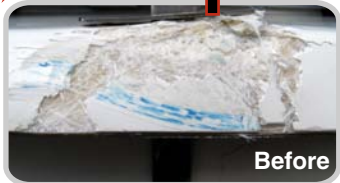
The specification includes quick release under hull straps, quick release buckles at all openings, velcro between the mast and bow and draw cords as standard to improve fit.

With all our covers being made in house, we are also able to offer a bespoke custom cover service.

For further information give us a call or email: [info@pinbax.com](mailto:info@pinbax.com)

National 12 Flat Cover Polycotton	£211.28
National 12 Flat Cover PVC Polyester	£146.60
National 12 Overboom Cover Polycotton	£229.97
National 12 Overboom Cover PVC Polyester	£160.32
National 12 Undercover Nylon	£129.36
National 12 Undercover Polycotton	£182.70
National 12 Rudder Bag	£35.40
National 12 Padded Mast Bag	£83.00

# Repairs



Pinnell & Bax experienced repair department is Insurance Approved. Whether you've had an accident or just need your boat sprucing up just give us a call.

We also offer a boat refit service to ensure best performance. We are specialists in most classes and can make sure you get the friction free set up that's right for you.

Pinnell & Bax Ltd. Heathfield Way, Kings Heath, Northampton. NN5 7QP  
Tel: 01604 592808 Email: [info@pinbax.com](mailto:info@pinbax.com)

# P & B

[www.pinbax.com](http://www.pinbax.com)

# 2009

1st Burton Cup  
2nd Burton Week  
1st Salcombe Week  
1st, 2nd, 3rd and 4th Bristol Corinthian  
1st Up River  
1st Waldringfield  
1st Ranelagh  
2nd North West Norfolk Week  
2nd Hunstanton



# National 12 Specialists

▲Boats ▲Sails ▲Spars ▲Covers ▲Chandlery ▲Repairs

# Boats

The National 12 is a fantastic two person, two sail, racing dinghy which is perfect for families, young teams and couples who enjoy racing. With a sail area of ~10.4m<sup>2</sup> and a light hull they are ideal for inland sailing on rivers, lakes & reservoirs and also great fun on the sea.

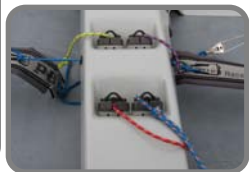
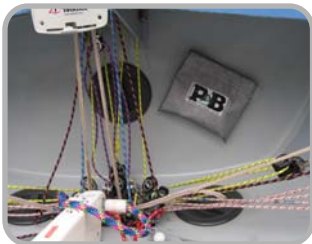
P&B has a long association with the class and our boat the Bim Daser designed Feeling Foolish is probably the most successful design of modern times.

*"A superbly refined 12ft dinghy that sets owners apart from the crowd and can be raced in all conditions"*  
Jeremy Evans Y&Y

Our moulded Bim Daser 'Feeling Foolish' design N12 is constructed using Epoxy Glass Foam Sandwich or Carbon as an option, in the Hull, Deck, thwart and double floor with rolled non-slip.

The P&B layout that completes the championship winning specification includes HOLT fit out as standard, Winder epoxy moulded foils, Winder or West Mersea trolley/trailer, a choice of P&B under/over covers and an option of SuperSpars or Selden spars with a cut of P&B sail to suit your weight.

**Ready To Race From £6920**



# Sails

Our continued involvement in National 12 racing allows us to stay at the forefront of rig & sail development. This generation of P&B sails are designed with the latest carbon spar technology to power up for the reaches and light winds, but allow you to flatten and de-power your rig in windier conditions. The P&B development programme has been proven with top results over 10 years and with Burton Week & Burton Cup wins in seven out of the last nine years.

## Mainsail

Last years development, the radial based mainsail received further tweaks this year with an enhanced head profile for more power.

Our mainsail designs have proved to be the most successful over the last fifteen years, with continual development making sure that not only do we head the fleet with sail shape but also with cloth and construction methods. Mainsails are available in Contender 3.8oz Polykote Ripstop, Contender 4.52oz Polykote, Dimension ODL 04 Aramid Laminate and also ODL06. The seams on both laminate sails are glued using "Ultra Bond TM adhesive System", giving a smoother, stronger sail.

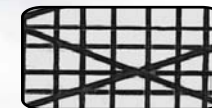
All sails come complete with battens, numbers, tell tales, tack window and a long sail bag.

- Contender 4.52oz. Ripstop Polykote
- Dimension ODL 06 Aramid Laminate
- Dimension ODL 04 Aramid Laminate

**£500.02**

**£608.84**

**£521.04**



## Jib

Our current jib design has proved extremely successful over the last two seasons. It features a "fat" clew for added area. Our standard jib is 2.22 m<sup>2</sup> but we will have made them as big as 2.7m<sup>2</sup> this year and will work to the numbers you need for your boat. We recommend that this sail is sheeted 38cm from the centre line. The sail comes complete with window, tells tales and hydraulically pressed clew eyelet.

This sail is constructed from 3.6oz. Polyant Ripstop and comes complete with window and tells tales

**£226.49**

*"We believe that only with direct involvement in the National 12 class can we truly develop the fastest sails"*

**Mail Order Hotline:**  
Online Chandlery Click On [www.pinbax.com](http://www.pinbax.com)

**(01604) 592808**  
**Info@pinbax.com**